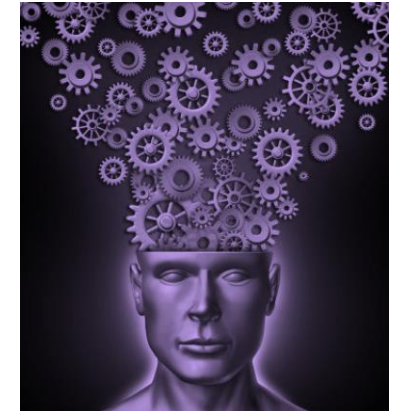


# Psychology Task

Research **2** of the following for the start of term in September:

- |                      |                       |                |
|----------------------|-----------------------|----------------|
| • Sigmund Freud      | Donald Meichenbaum    | M.G. Marmot    |
| • Albert Bandura     | Stanley Milgram       | Hans Selye     |
| • B.F. Skinner       | Solomon Asch          | Carl Rogers    |
| • John Watson        | Serge Moscovici       | Penelope Leach |
| • Mary Ainsworth     | Elliot Aronson        | Michael Rutter |
| • Frederick Bartlett | Charlan Nemeth        | Jean Piaget    |
| • Alan Baddeley      | Phillip Zimbardo      | Lev Vygotsky   |
| • Elizabeth Loftus   | Marie Jahoda          | Jerome Bruner  |
| • John Bowlby        | Albert Ellis          | Abraham Maslow |
| • Jay Belsky         | Janice Kiecolt-Glaser | Sandra Bem     |



Key features to identify

- Main areas of interest
- Main methods used (How they conducted their research)
- Key ideas, assumptions, explanation and contributions
- Historical significance (When/Where they worked and did they influence anyone else?)

It must be at least **two** sides of A4 typed and it will be shared with other students in September